



# TPS1 SERIES

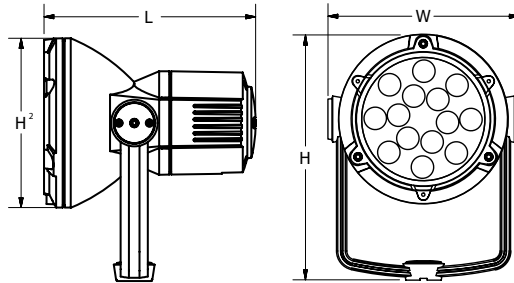
## YOKE MOUNT

## RGB LED FLOOD LIGHT

**LED** IP66

### Specifications

EPA:	0.7 ft <sup>2</sup>
	0.065 m <sup>2</sup>
L:	10.5"
	267 mm
W:	9.50"
	241 mm
H:	11.68"
	297 mm
H <sup>2</sup> :	8.40"
	213 mm
Weight	15 lbs



CATALOG  
NUMBER

NOTES

TYPE

## DESCRIPTION

The TPS1 RGB Floodlight is an axial styled floodlight designed for dynamic lighting of architectural and landscape feature with saturated controllable color for architainment effects. This luminaire uses a RDM enabled red, green, and blue (RGB) LED array that is field discoverable and programmable for ease of installation and show programming. Integral LED RGB driver capable of dimming to dark.

### ORDERING INFORMATION

EXAMPLE: TPS1 18LED RGB MVOLT NSP YM RDM BL

Series	Lamp type	Color	Voltage	Distribution	Mounting	Mounting Accessories
TPS1	18LED	RGB	MVOLT (120-277 volt)	NSP Narrow Spot MFL Medium Flood FL Flood WFL Wide Flood HSP Horizontal Spot HFL Horizontal Flood	YM Yoke Mount	EWM_ Ext. Wall Mt available 12"-48" in 6" increments PAR_/_ Pole Arm Round 4", 5", or 6" Pole 12", 18", or 24" length (i.e. PAR5/18) PAS_/_ Pole Arm Square 4", 5", or 6" Pole 12", 18", or 24" length (i.e. PAS4/24) PATR_/_ <sup>1</sup> 1 Pole Arm Twin Round 4", 5", or 6" Pole 12", 18", or 24" length (i.e. PATR6/12) PATS_/_ <sup>1</sup> 1 Pole Arm Twin Square 4", 5", or 6" Pole 12", 18", or 24" length (i.e. PATS6/12)

Mounting Accessories (Cont'd)	Control	Accessories	Finish
WPTL Wall Plate w/ Taper Lock ARTL Arch. Junction Box w/Taper Lock PMT <sup>1</sup> Pole Mount Tee PMSA Pole Mt Splice Access. SMSA_ Stanchion Mt Splice Access available 12"-48" in 6" increments SMT12/24 <sup>1</sup> Stanchion Mt Tee, 12" height SMT18/24 <sup>1</sup> Stanchion Mt Tee, 18" height SMT24/24 <sup>1</sup> Stanchion Mt Tee, 24" height	RDM <sup>2</sup> Remote device management	<u>Internal</u> IHL Internal Honeycomb Louver <u>External</u> <sup>3</sup> GS Glare Shield FGS Full Glare Shield WRG Wire Rock Guard	BL Black BZ Bronze DDB Dark Bronze DNA Natural Aluminum GN Green GR Gray SND Sand STG Steel Gray TVG Terra Verde Green  WH White CF Custom __Z <sup>4</sup> Zinc Undercoat (i.e. BLZ) RAL TBD RAL Paint Finishes  Note: RAL TBD for pricing only, replace with applicable RAL call out when ready to order. See the RAL BROCHURE for available options. It is recommended only use textures paint for Hydrel fixtures.

### Notes:

1. Requires two fixtures per mounting.
2. RDM = Field discoverable and field programmable DMX.
3. Options are mutually exclusive, choose one.
4. Add Zinc undercoat for harsh environments.



One Lithonia Way Conyers GA. 30012  
Phone: 888-834-5684 • www.hydrel.com

© 2007-2018 Acuity Brands Lighting, Inc.  
10/11/18  
TPS1 LED RGB

## PERFORMANCE DATA

### LUMEN OUTPUT

Lumen values are from photometric tests performed in accordance with IESNA LM-79-08. Data is considered to be representative of the configurations shown, within the tolerances allowed by Lighting Facts. Actual performance may differ as a result of end-user environment and application. Contact factory for performance data on any configurations not shown here.

	Distribution	NEMA TYPE	Beam Angle (50%) H x V	Field Angle (10%) H x V	Watts	LPW	Delivered Lumens
All colors full on	NSP	2 x 2	8 x 8	20 x 20	47	17	810
	MFL	3 x 3	21 x 21	39 x 39	47	18	845
	FL	5 x 5	73 x 47	94 x 79	47	16	775
	WFL	6 x 6	100 x 100	125 x 125	47	11	498
	HSP	3 x 2	26 x 10	40 x 23	47	19	880
	HFL	2 x 4	10 x 38	22 x 54	47	20	933

### Electrical Load

			Current (A)			
Light Engines	Drive Current (mA)	System Watts	120	208	240	277
18 LED	750mA	47	0.39	0.23	0.20	0.17

### Recommended controllers

#### Easy! DMX touchscreen

<http://www.acuitybrands.com/products/detail/210270/Fresco/Easy!/>  
Easy!-DMX512A-Show-Controller



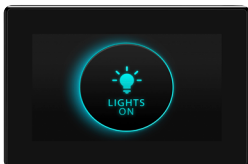
**Easy!™ Solo:** Is a standalone entry-level controller enabling show creation and playback directly at the LCD touchscreen.

**Easy!™ Touch:** features an astronomic time clock for automating shows and expands the controller's features by accepting inputs from remote button stations, and button station contact closure inputs.

**Easy!™ Pro:** is further enhanced by using Easy! Studio™ computer software to create multi-zone shows, and Easy! Pro features a 20 hour DMX512 capture from a theatrical console.

#### Fresco

<http://www.acuitybrands.com/products/detail/223381/Fresco/Fresco-Touchscreen-Lighting-Controllers>



#### FCS

- Create and edit 36 lighting scenes including intensity, color, and color temperature
- Integral astronomic timeclock with battery backup for system scheduling
- Direct DMX control for 1 universe (512 slots)
- Internal Bluetooth® radio for wireless App control

## FEATURES & SPECIFICATIONS

**MATERIAL:** Die Cast Aluminum (A360) housing, Galvanized Steel brackets, black silicone gaskets with stainless steel fasteners.

**LED:** RGB LED to 47 watts. Lumen maintenance of individual light sources has been independently tested using IESNA LM80 standards.

**VOLTAGE:** MVOLT

**OPTICS:** NEMA flood (2x2 through 6x6), horizontal flood, horizontal spot.

**LENS:** Flat tempered glass for maximum resistance to impact.

**MOUNTING:** Yoke mounted with 10' of 16-7 STW flexible cord for power 10' of DMX data cable.

**GLARE CONTROL:** Internal glare control and external glare control available.

**ELECTRICAL:** Integral RGB power driver. MVOLT (120-277 volt) 50/60HZ LED power supply dims to zero. THD <20%, class 2 driver with 100% to dim to dark.

**CONTROL:** DMX512 direct via 5 wire DMX cable or ethernet cable (by others). Compatible with the EASY! and FRESKO DMX controllers. All channels run at a maximum of 44 frames per second and have logarithmic power for finer color and intensity control.

**FINISH:** Exterior parts are protected by a zinc-infused super durable TGIC thermoset powder coat finish that provides superior resistance to corrosion and weathering. A tightly controlled multi-stage process ensures a minimum 3 mils thickness for a finish that can withstand extreme climates without cracking or peeling.

**FASTENERS:** Stainless steel.

**LISTING:** CSA, CSAUS

**WEIGHT:** 15 lbs.

**EPA:** 0.7 ft2

**Patent No.:** US D663,877 S

**WARRANTY:** 5-year limited warranty. Complete warranty terms located at: [www.acuitybrands.com/CustomerResources/Terms\\_and\\_conditions.aspx](http://www.acuitybrands.com/CustomerResources/Terms_and_conditions.aspx).

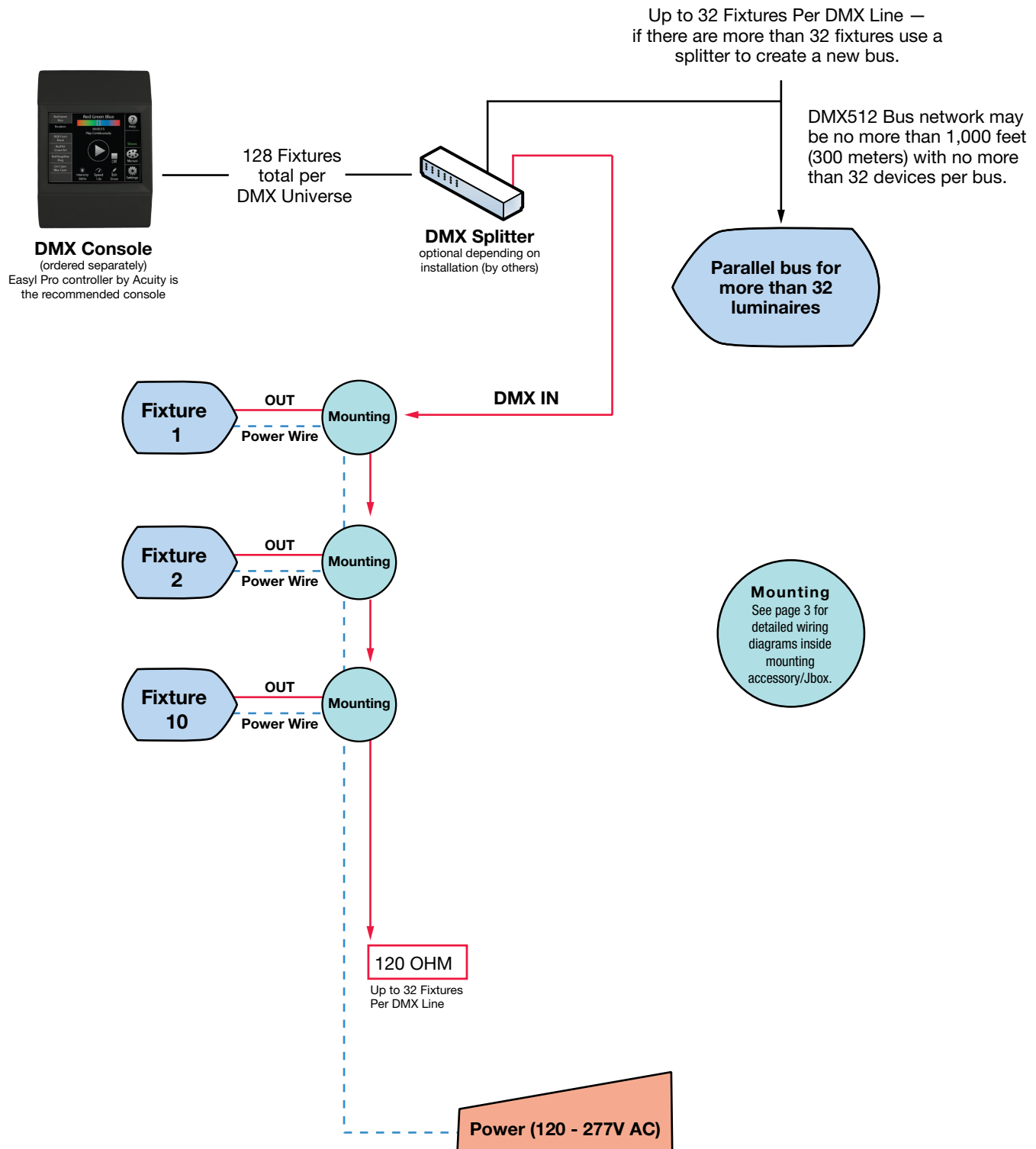
**NOTE:** Actual performance may differ as a result of end-user environment and application. All values are design or typical values, measured under laboratory conditions at 25 °C. Specifications subject to change without notice.



One Lithonia Way Conyers GA. 30012  
Phone: 888-834-5684 • [www.hydrel.com](http://www.hydrel.com)

© 2007-2018 Acuity Brands Lighting, Inc.  
10/11/18  
TPS1 LED RGB

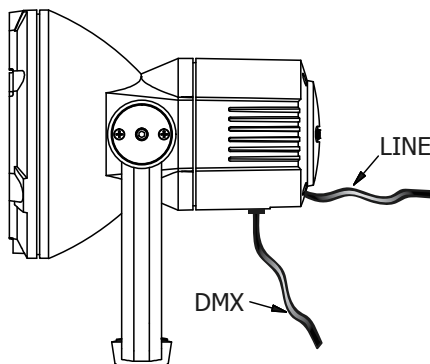
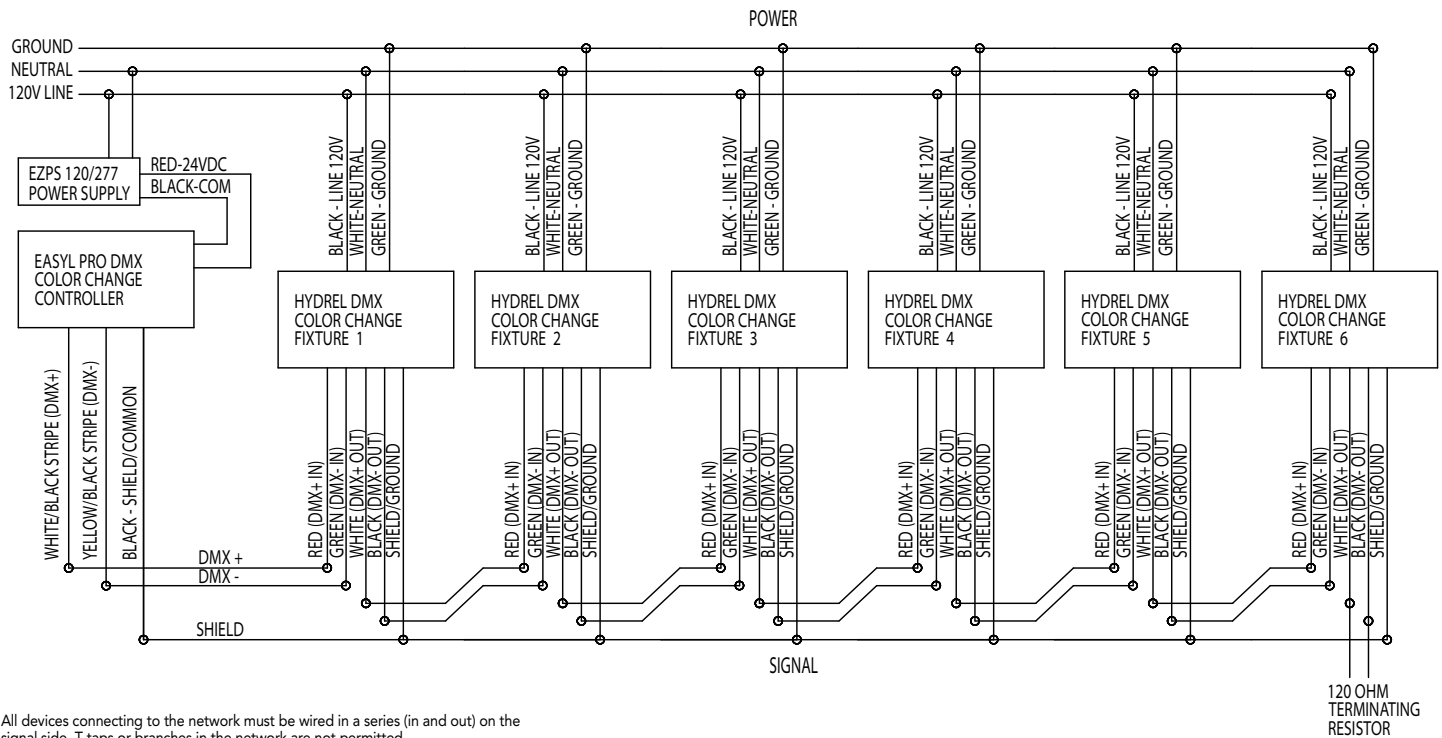
## DMX WIRING — FLOOD



### Notes:

1. DMX512 must be terminated by a 120 ohm resistor.
2. Signal cable by others, cable must be two-pair with a maximum capacitance of 12.8 pF/ft. and a impedance of 120 ohm.

## DMX Connection and Termination — Wiring Diagram



Fixture comes standard with 10' of STW cable  
and 10' of DMX data cable.



One Lithonia Way Conyers GA. 30012  
Phone: 888-834-5684 • [www.hydrel.com](http://www.hydrel.com)

© 2007-2018 Acuity Brands Lighting, Inc.  
10/11/18  
TPS1 LED RGB

## EXTERNAL ACCESSORIES



**GS — Glare Shield**  
Formed aluminum with  
A360 die-cast mounting  
ring, field installable.

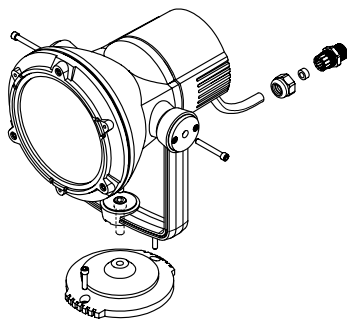


**FGS — Full Glare Shield**  
Formed aluminum with  
A360 die-cast mounting  
ring, field installable.

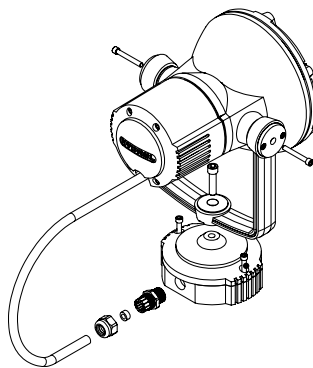


**WRG — Wire Rock Guard**  
Stainless Steel welded wire  
guard, field installable.

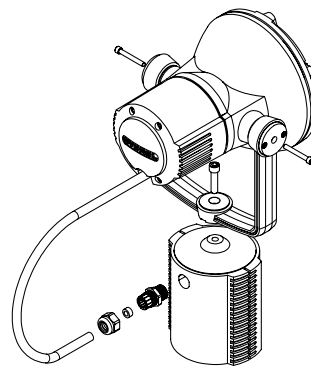
## MOUNTING ACCESSORIES



**WPTL**  
Die-cast aluminum Wall Mount Plate  
designed for surface mounting of the  
taper lock yoke on the TPS fixture to any  
surface.



**WMTL**  
Die-cast aluminum Wall Mount cover for  
mounting the TPS series fixtures with  
the taper lock yoke can be used over a  
recessed or surface mount conduit.



**ARTL**  
The Architectural Junction Box is a die-cast  
aluminum accessory for direct mounting of  
the TPS series lighting fixtures.